

September

10/23/2025 4:27 pm EDT

[Leer artículo en español](#)

New Studio Version - September



Activities Average Report at Institution Level

As a TM, CTM, or CTV, you can access the <Institution Reports> option to view the <Average Score Report>, which allows you to see students' performance in each type of activity.



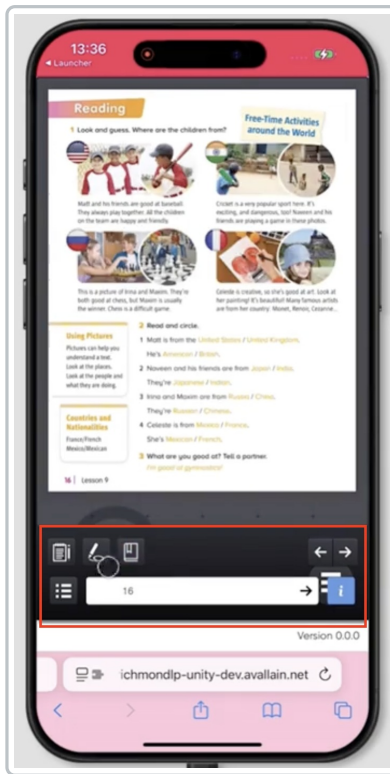
ETS Integration for Studio

Richmond Studio integration will now be compatible with K12.



E-books Menu - Mobile Version

The e-books menu now works in the mobile version of Studio.



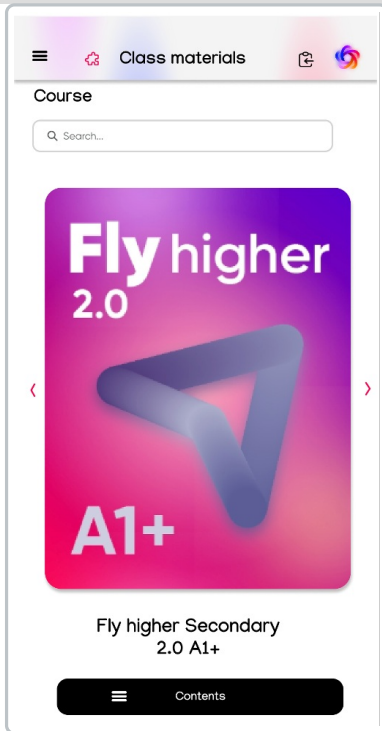
Individual mobile view of covers.

From now on, the covers will be displayed individually within <Class materials> when viewed on mobile.

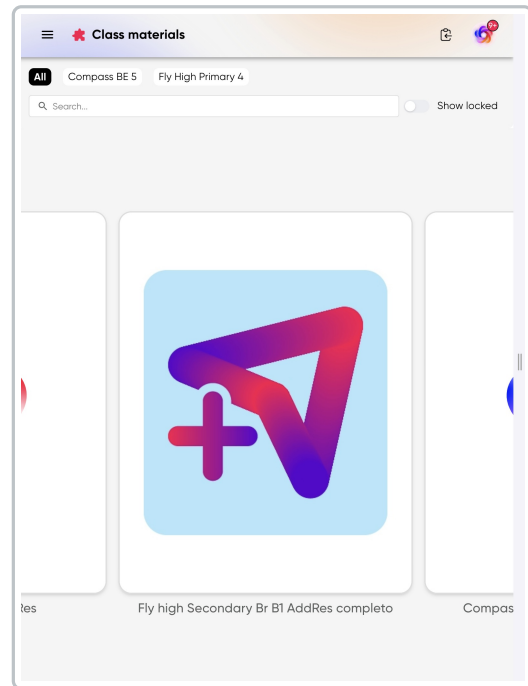
Mobile View

Tablet (portrait view)

Mobile View



Tablet (portrait view)



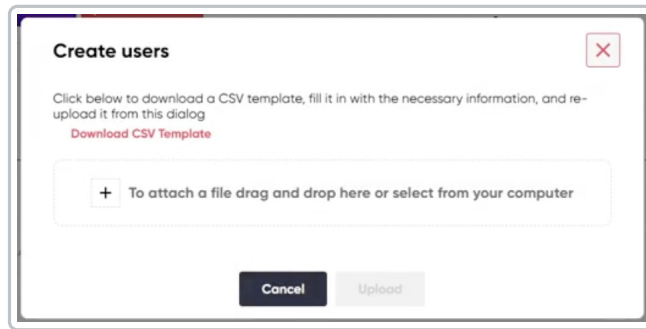
Audio on mobile devices

Audio in the mobile version plays without any issues.



Bulk User Creation

It is now possible to create users in bulk in Richmond Studio.



<Next Activity> option functioning correctly

The <Next Activity> button is activated correctly in Richmond Studio.



Markbook with correct information

The Markbook displays correct information in the <Self-Study> module.

COURSE	1ST	LAST	AVG
Compass 1 eLanguage Log	100%	100%	100%
Topic 1	100%	100%	100%
eLanguage Log	-	-	-
Activities	100%	100%	100%
Page 6, activity 1 - Topic 1 Who am I?	-	-	-
Page 8, activity 1 - Topic 1 Who am I?	100%	100%	100%
Page 8, activity 2 - Topic 1 Who am I?	-	-	-
Page 9, activity 1 - Topic 1 Who am I?	-	-	-
Page 9, activity 2 - Topic 1 Who am I?	-	-	-
Page 9, activity 3 - Topic 1 Who am I?	-	-	-



Set a class end date later than the start date.

The system prevents this configuration and displays a validation message indicating that the end date must be later than the start date.



In <Games> at the beginner level, the coins earned are successfully saved.



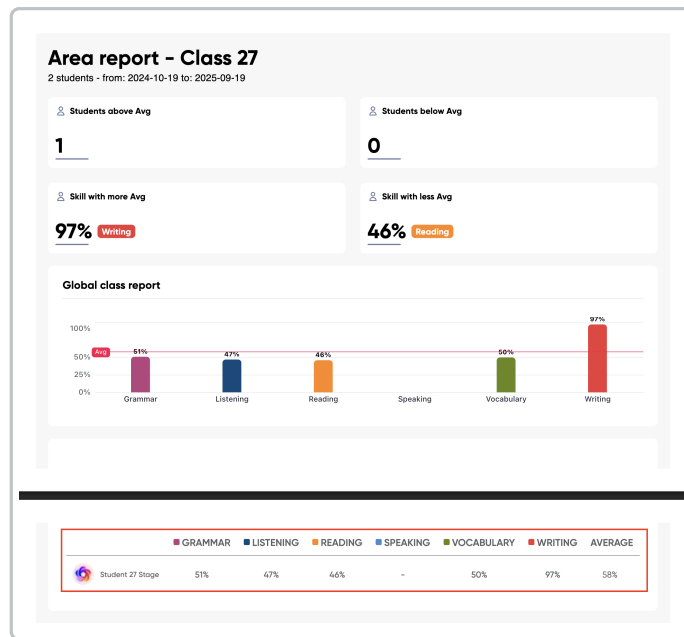
Users from integrated institutions have self-registration disabled.

Users from institutions integrated with Connect, e-Stela, or Tangerine will not be able to self-register using a token for these institutions.



<Students> section in downloadable PDF reports.

The <Students> section is included in the PDF reports, not just class-level data.



User blocking if there are no Agreements articles.

It will be possible to block access to Richmond Studio so that only users with specific articles can enter, preventing preschool users or those from unauthorized levels from accessing the application.



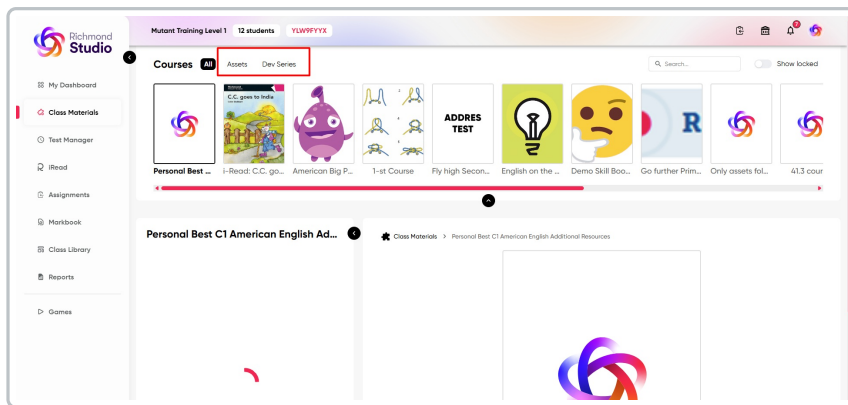
Structure with Additional Resources.

When you publish a structure with Additional Resources, the Assets are visible on the platform.



Tags sorted alphabetically.

The tags used to group products in class materials are sorted alphabetically.

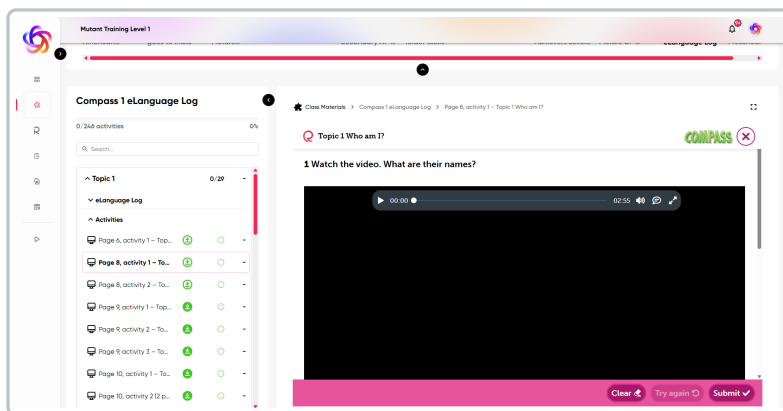


Events table and initial data capture.

We will have a new system to capture user interaction with the platform to enhance the entire data analytics process.

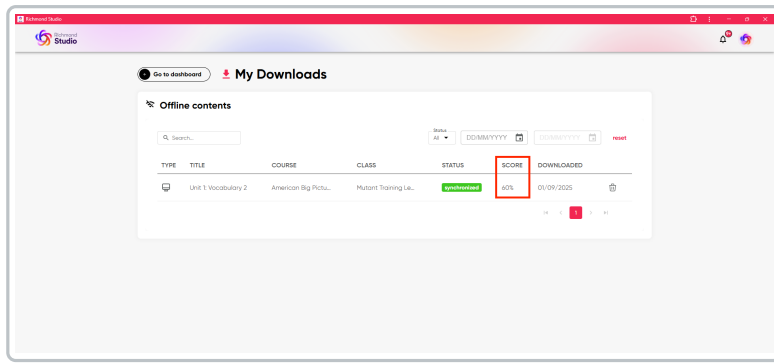


The <LO> icons are displayed when offline.



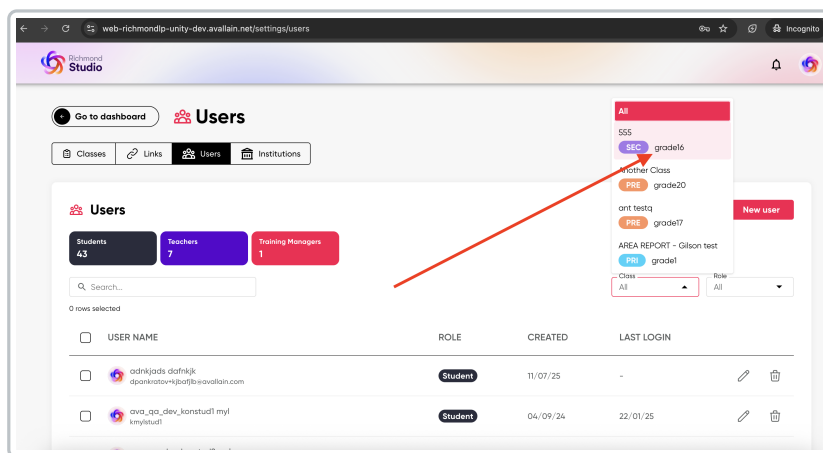
Update the score of the downloaded LO when it is submitted after downloading.

In the <My Downloads> section, the score obtained from completing an activity offline will be displayed.



User Management Classes Filter.

The class filter in the user management panel will display the full grade name according to the country.



The <Expand> button has been removed when using the PWA on iPads.

The activity expand button has been removed when using the PWA on iPads, as the library is not compatible. It will be included in future versions.



Prevent the creation of a hotspot when reading an e-book from the Progressive Web App (PWA) in offline mode.

Prevent a new browser window from opening when the user clicks any hotspot within an e-book downloaded for offline use in the PWA.



The student profile shows the closing time for test-type assignments.

As a student, when you have a multiple-choice assignment, you must check the closing time.



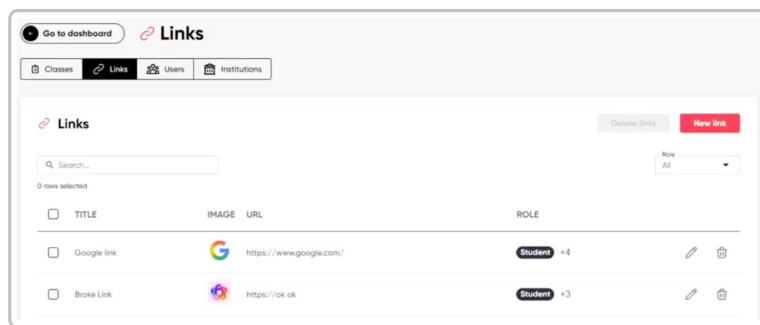
Successful download of the institution's diagnostic test report as a PDF.

Click on the download button triggers the download of the institution's diagnostic test report in PDF format.



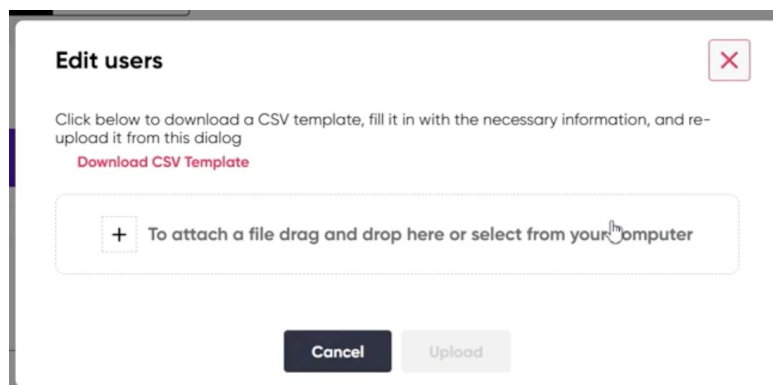
Improvement in the My Links section.

The selection of links displayed in the My Links section has been improved.



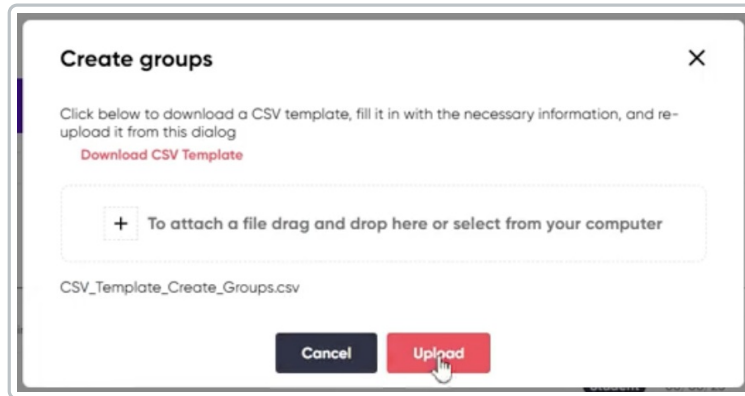
Bulk User Editing.

Bulk user editing for Stand Alone institutions via CSV.



Bulk Group Creation.

It is now possible to create groups in bulk for users in Studio.



iRead works correctly on tablets and Android mobile smartphones.

iRead does not work properly on tablets and Android mobile smartphones; however, the menu for viewing content functions correctly.



The email is received when a new user is created, and the notification password grants access.



Class creation with all elements without issues.



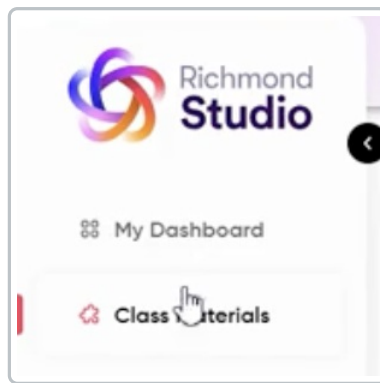
Improve the user interface in the version number view.

The position and display of the version number on the platform have been improved.



Unnecessary tooltips in the main menu have been removed.

Tooltips that appeared in global modules have been removed.



Users can be created without an FE domain.

It is important to be able to create users without a domain, as the users are mainly students and do not have an email address.



Improvements in the reading completion report in iRead.

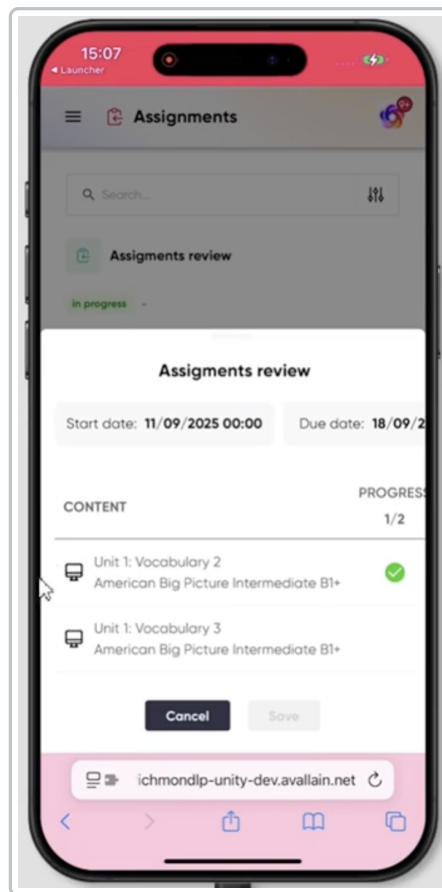
iRead reading chapters will no longer give a 100% score upon completion and will not be included in the average of assignment grades.



Students will be able to open their assignments from the mobile view to complete them or review previously completed assignments.

Provide students in the mobile view with the same capabilities they already have on desktop and tablet:

- Open and complete active assignments.
- Review completed assignments (answers + scores).



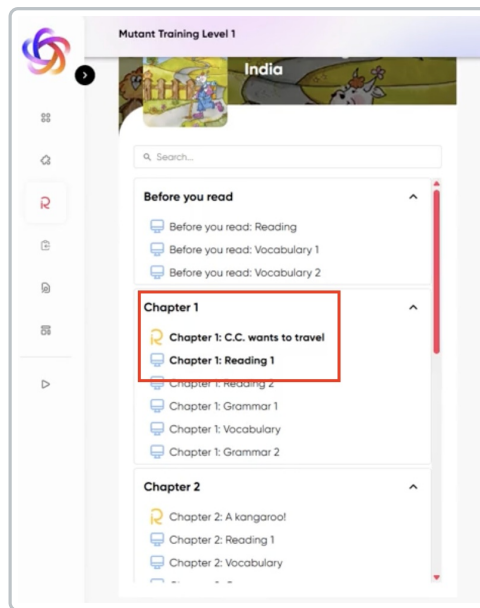
Detailed information is displayed in the Markbook.

Detailed information is displayed in the Markbook even if the assignments are already closed.



When a reading LO in an iRead chapter is completed, it closes.

At the end of a reading chapter in iRead, the closing behavior is triggered. When the <Finish reading> button is clicked within an iRead reading chapter, the reading closes and the next activity opens.



Unified Endpoint Security (UES) HUB Integration in Turkey.

UESHUB integration is enabled to provide Single Sign-On (SSO) for users without requiring any additional manual configuration.



PWA view on iPads and iPhones is improved.

The PWA view on iPads and iPhones is enhanced to display the application correctly when scrolling down.



Authorization: Expire/Refresh

The user session authentication system is improved to prevent errors or unexpected behaviors on the platform.



Downloadable file:
[Update_091525.pdf](#)